

AN INTRODUCTION TO SHORT STORIES

DEFINITIONS OF
LITERARY TERMS
USED IN FICTION

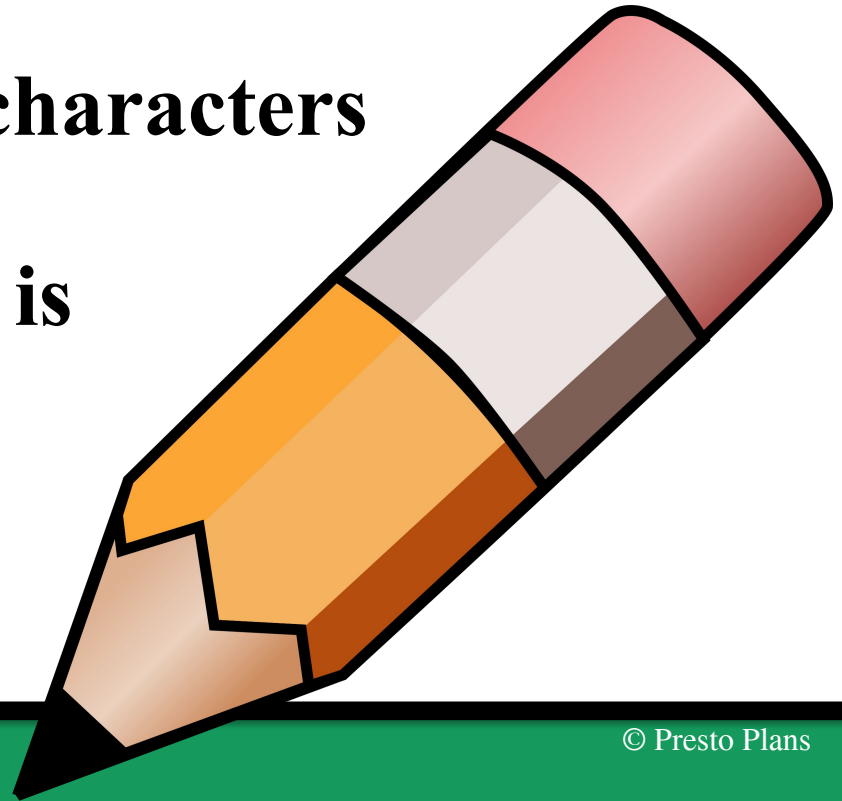


WHAT IS A SHORT STORY?

A short story is a fictional, narrative piece of prose. A short story has many of the same elements as a novel; however, because it covers a shorter period of time, a short story has...

1. Less developed characters

1. A conflict which is introduced and resolved quickly



REMINDERS

WHAT DO THESE WORDS MEAN?

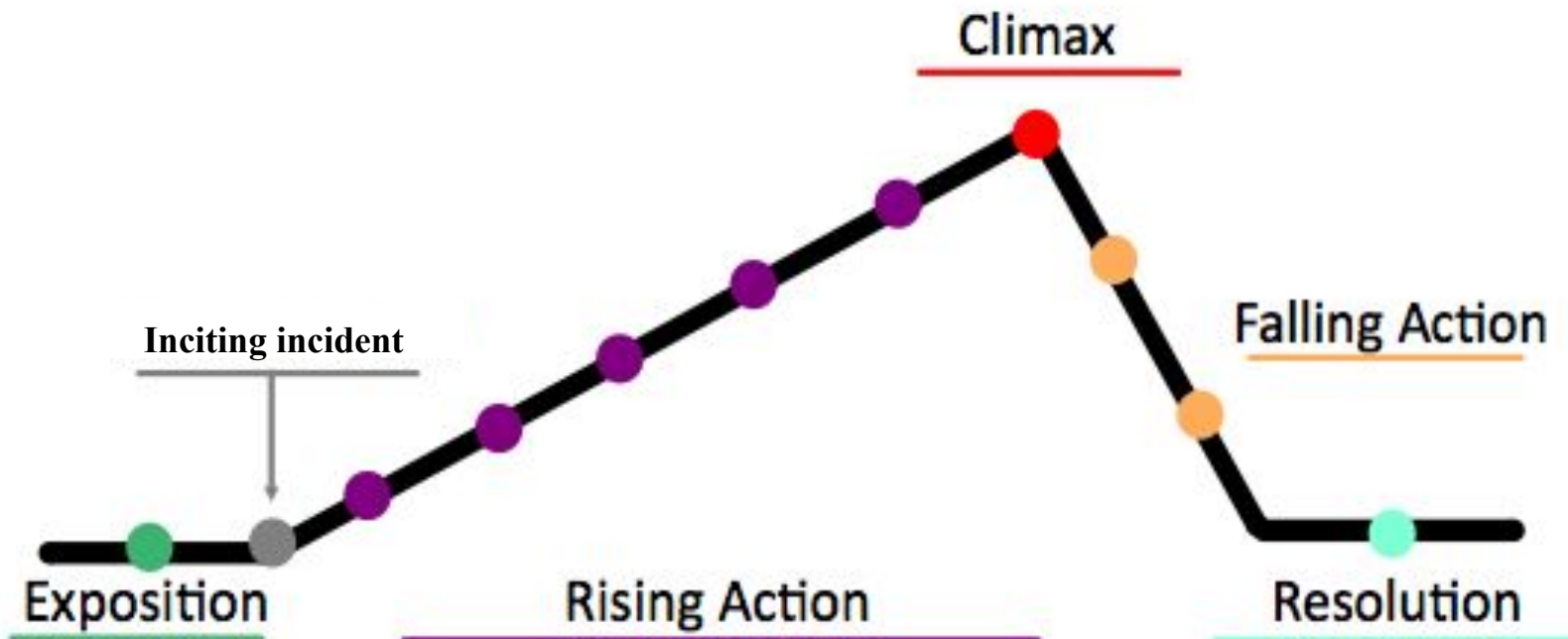
Fictional: If a story is fictional, it is not true

Narrative: The events that make up the story.

Prose: Any writing that is not poetry.

THE PLOT DIAGRAM

The plot diagram is the most common way that a fictional story is organized.



THE PLOT DIAGRAM

Exposition:

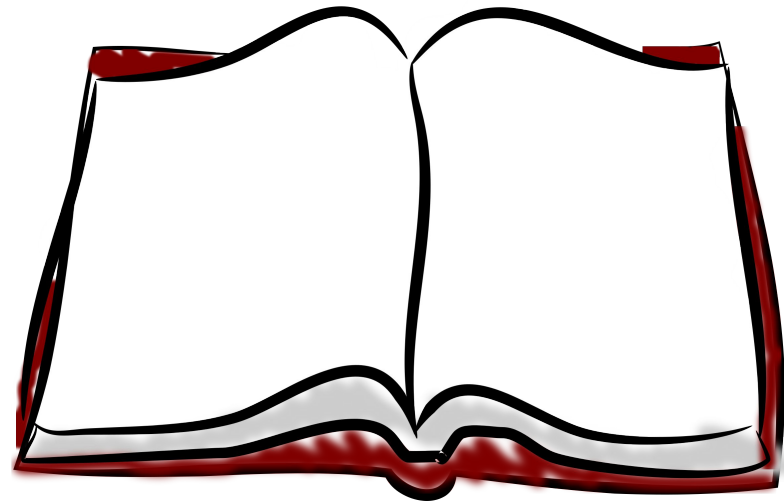
This is where the story begins. In this section you are introduced to the characters, the setting, and the mood.

Inciting Incident:

This is where the reader is introduced to the conflict.

Rising Action:

This is where most of the action happens. It is also where tension and suspense is built.



THE PLOT DIAGRAM

Climax:

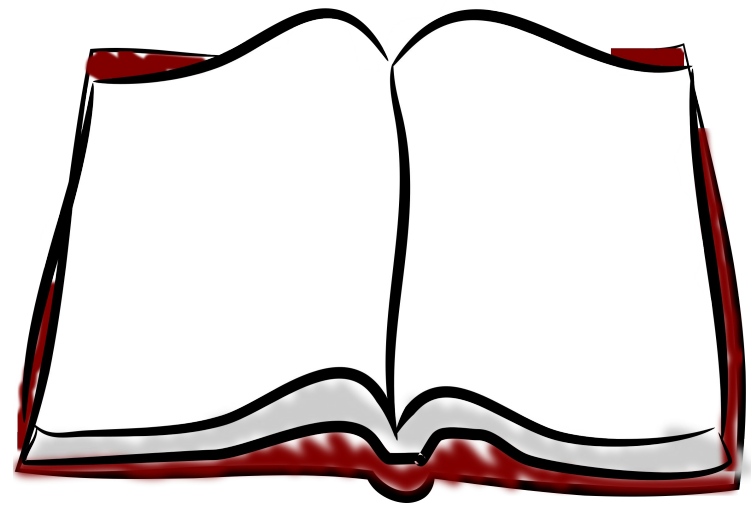
This is the most exciting part of the story. It is where the conflict reaches its highest point.

Falling Action:

This is where the conflict begins to resolve. The problems are starting to be 'cleaned up'.

Resolution:

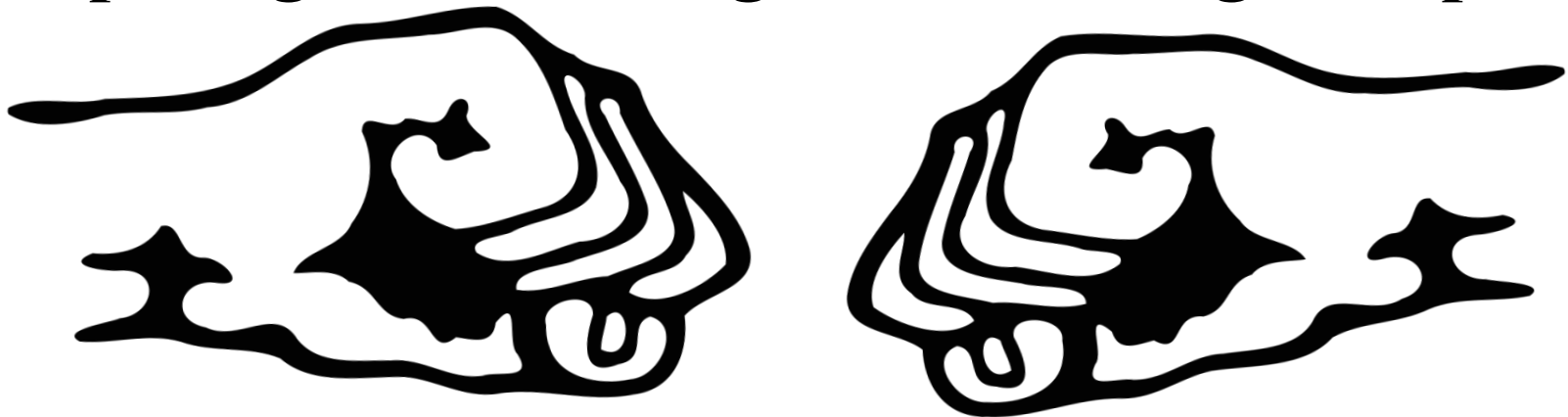
This is where the conflict has completely resolved and all questions are answered. Not all stories have this!



CONFLICT

Conflict is the problems which often happen between the protagonist (hero) and antagonist (person against the hero).

Conflict is the most important aspect of the plot. Conflict is resolved when either the protagonist or antagonist wins or gives up.



CONFLICT

6 Types of Conflict

Person Vs Person

Person Vs Self

Person Vs Environment

Person Vs Society

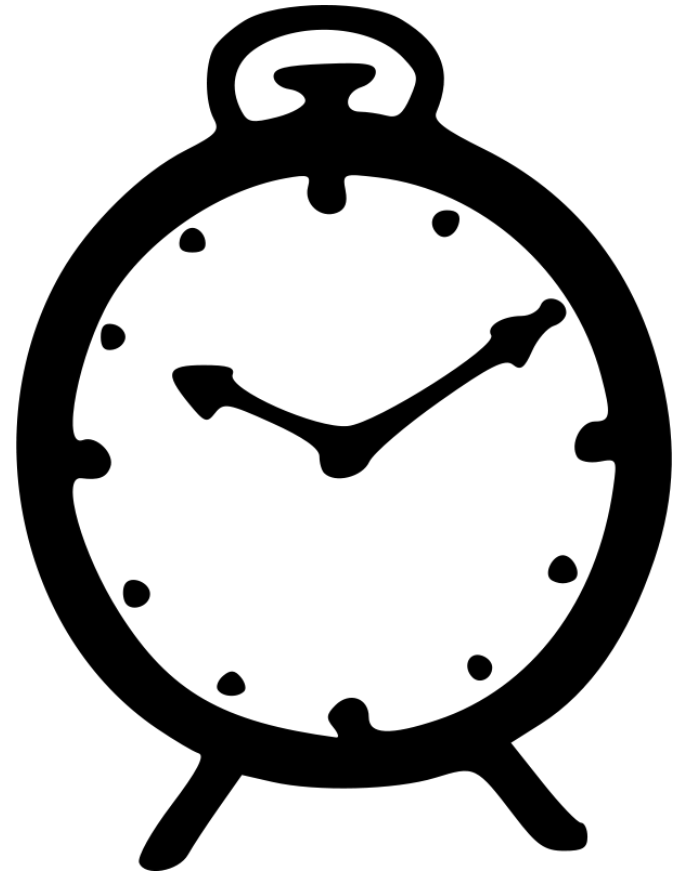
Person Vs Supernatural

Person Vs Technology



SETTING

Setting is the time and place of the story.

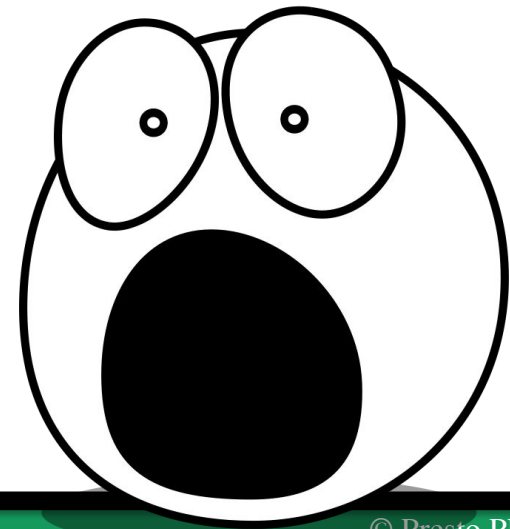
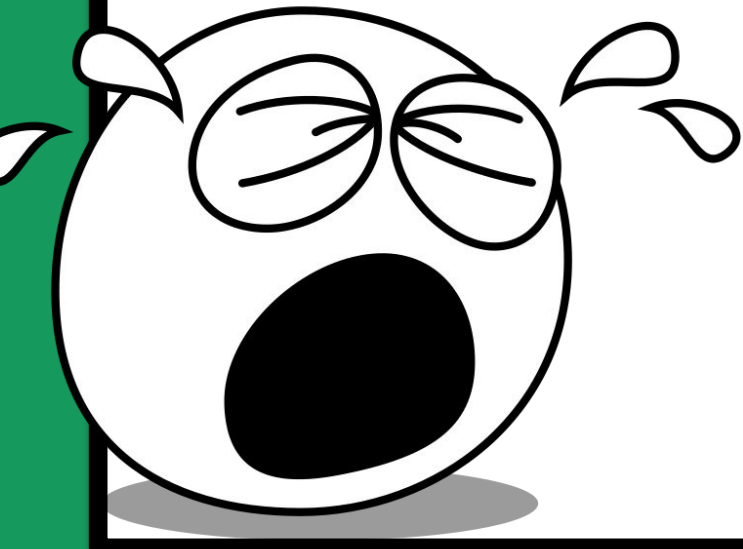


The Functions of a Setting

- To create a mood or atmosphere
- To show a reader a different way of life
- To make action seem more real
- To be the source of conflict or struggle
- To symbolize an idea

ATMOSPHERE

When the setting or scene causes an emotional response in the reader.



POINT OF VIEW

Refers to who is telling the story:

First person:

When the character is involved in and is telling the story. It is easily identified by the use of "I".

Third person/Omniscient:

When the narrator is not involved in the story. He/she knows all. Uses "He", "She", "They"



Third-Person (2 Types)

- **Third-Person Limited:**
 - The narrator knows the thoughts and feelings on only ONE character in a story.
- **Third-Person Omniscient:**
 - The narrator knows the thoughts and feeling of ALL the characters in a story.

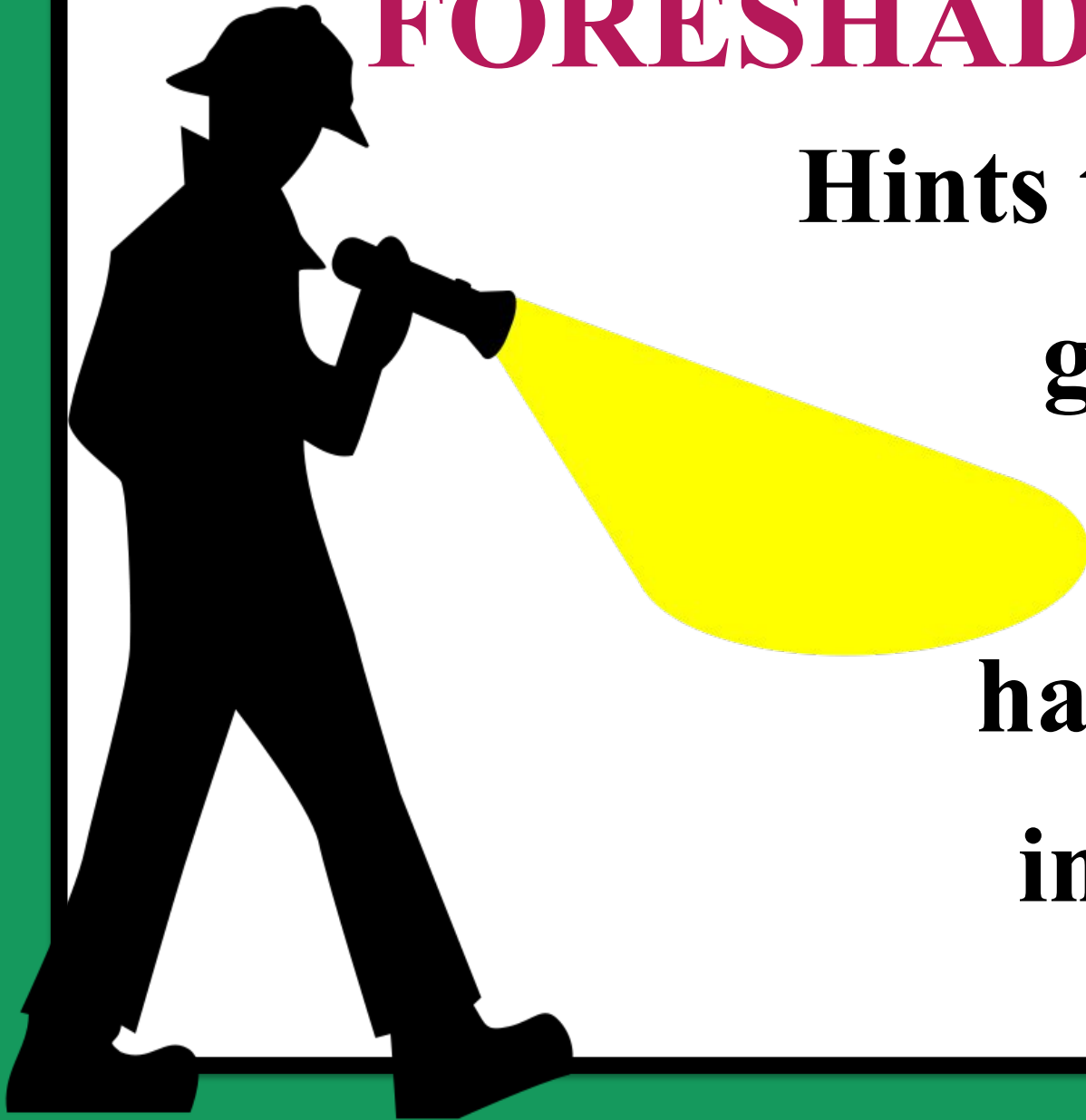
TONE

Tone provides the author's feelings about the subject of the story shown by his/her writing style



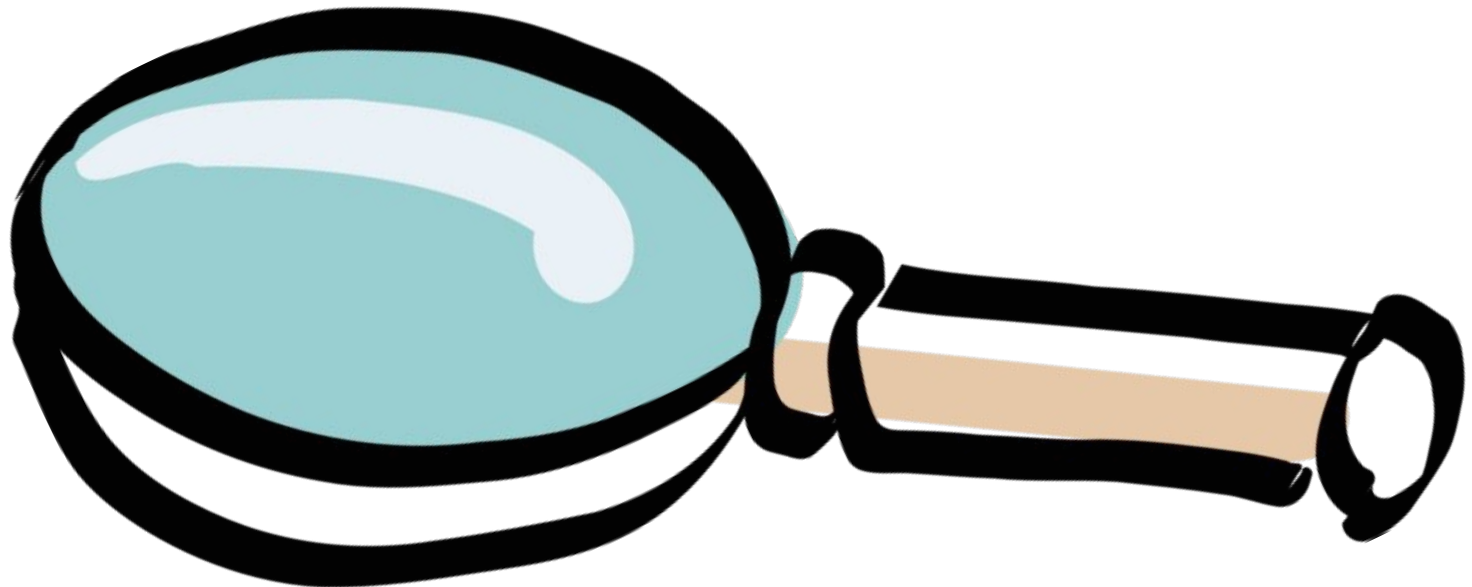
FORESHADOWING

Hints the author
gives about
what will
happen later
in the story.



THEME

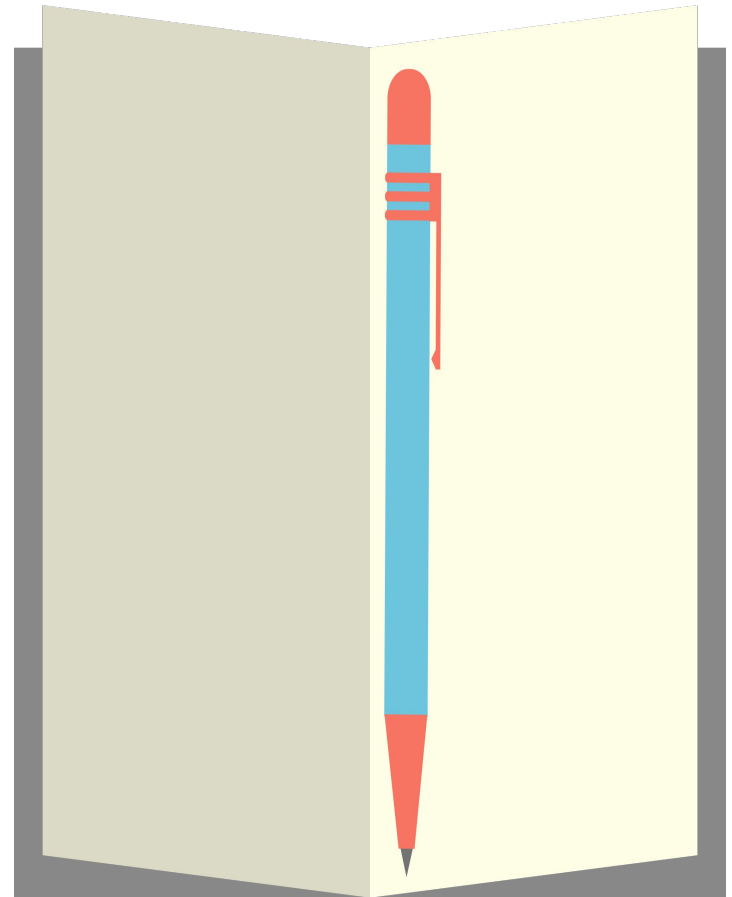
The main idea or the central thought of the story. Usually the theme sparks a lot of debate/conversation and provides insight into the human condition.



IRONY

Situational Irony:


**The opposite happens to what the reader has been led to expect.
(Real life example -
You stay up all night to study for a test to find it has been canceled the next day).**



IRONY

Verbal Irony:

The speaker says one thing but means the opposite (Real life example - Someone comes to your house in old ripped up clothes and you say "oh, I see you dressed up for the occasion")



IRONY

Dramatic Irony:

The audience or reader is aware of something one or more of the characters is not aware of (Real life example – In horror movies, the audience will often know where the killer is when the characters do not).

